

SMS CLIENT MANAGER

The SMS client troubleshooting tool combining powerful auditing functionalities and remote SMS actions



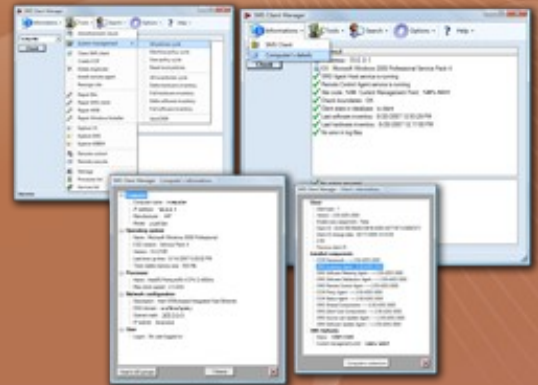
SMS Client Manager, the expert tool for :

- ✓ **Helpdesk** : Quick auditing of main SMS client core components
- ✓ **SMS experts** : Many tools to help determining faulty configurations and repair components

Get data from remote computers

Quick review of the remote computers software and hardware inventories.

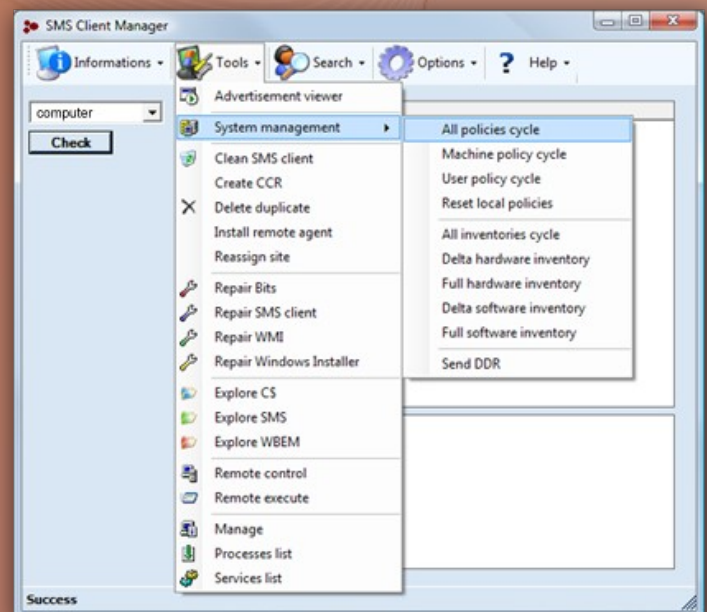
Check the linked advertisements available for the computer or the current logged user



Launch actions remotely

Relaunch a scheduled advertisement,
repair SMS client,
force policies and inventories,
open third party management tools...

Many features included, no need to log on to the remote computer anymore!



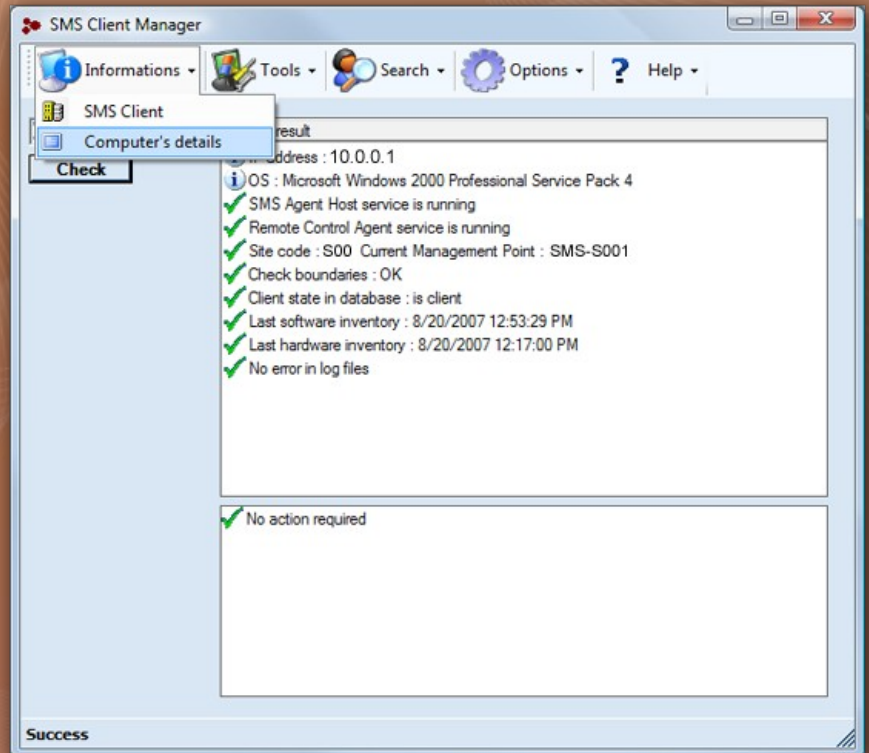
SMS CLIENT MANAGER

The ultimate companion tool for SMS administrators to achieve the best efficiency.



Review services availability and system state

- ✓ Search for computers and user throughout the active directory
- ✓ Get status of advertised programs
- ✓ Get all relevant system information (user, hardware, software,...)
- ✓ Reinstall and repair SMS client
- ✓ Enable hidden SMS functionalities



Advanced support of SMS clients

Monitoring and repairing system components required for SMS such as BITS or WMI.

SMS Log file deep analysis

Pre-requisites

.net framework

Windows 2000 or later